

ECONOMIC DEVELOPMENT IMPACT

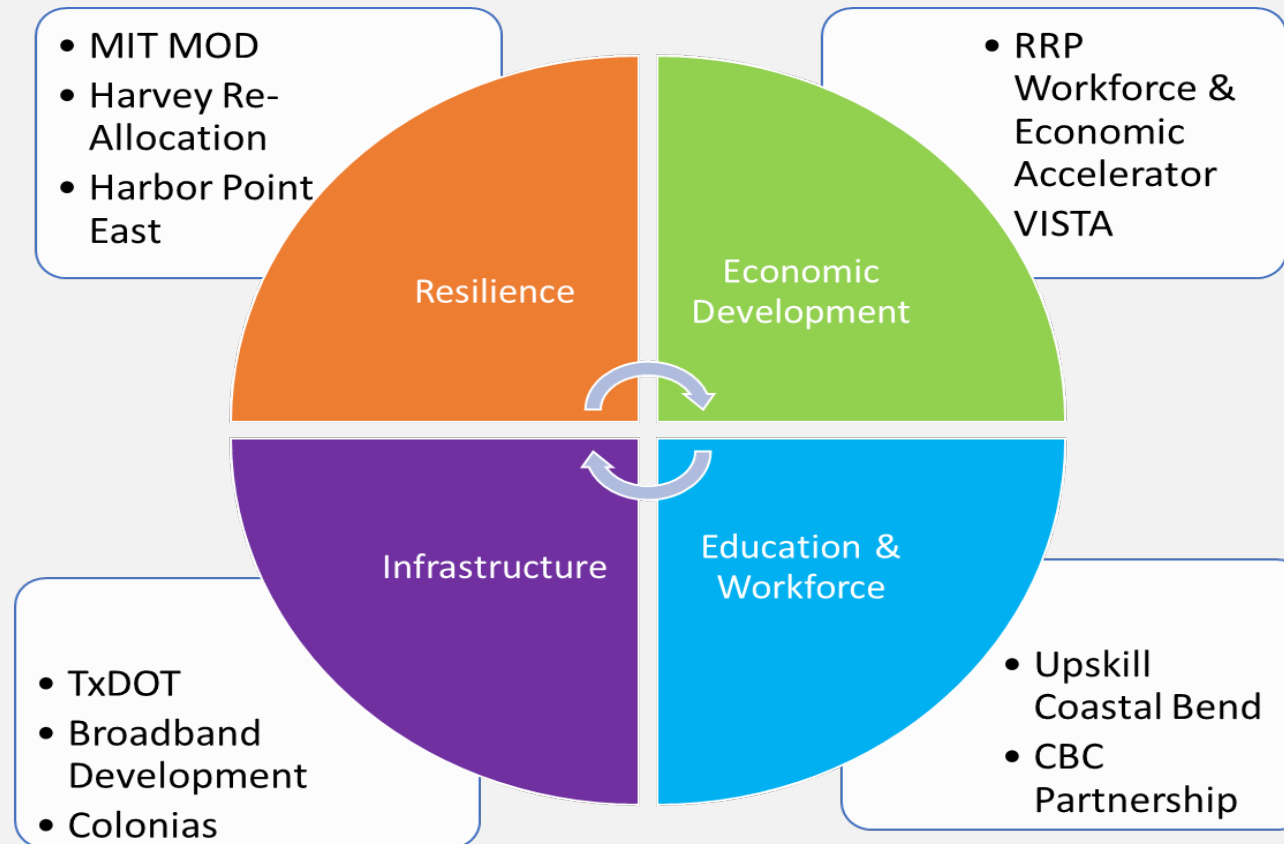
PRESENTATION TO BOARD OF DIRECTORS

MARCH 24, 2023

EMILY MARTINEZ

DIRECTOR OF REGIONAL ECONOMIC DEVELOPMENT

PRIORITIES AND PROJECTS



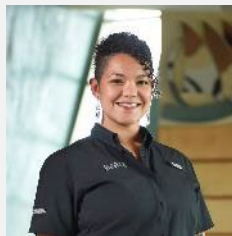
FORMAL PARTNERSHIPS



PEOPLE OF RRP

Stakeholders: RRP primarily serves communities in the Texas Coastal Bend region. Examples include:

- Local government
- Chambers of Commerce
- Economic Development Corporations
- Workforce
- Independent School Districts
- Non-profit organizations
- Civic organizations
- Churches
- Public health entities
- Industry partners
- Higher Education
- State agencies and federal partners



INTERNATIONALLY RECOGNIZED EXPERTISE



OPEN ACCESS

EDITED BY
Lucia Velotti,
John Jay College of Criminal Justice,
United States

REVIEWED BY
Annelie Sjölander Lindqvist,
University of Gothenburg, Sweden

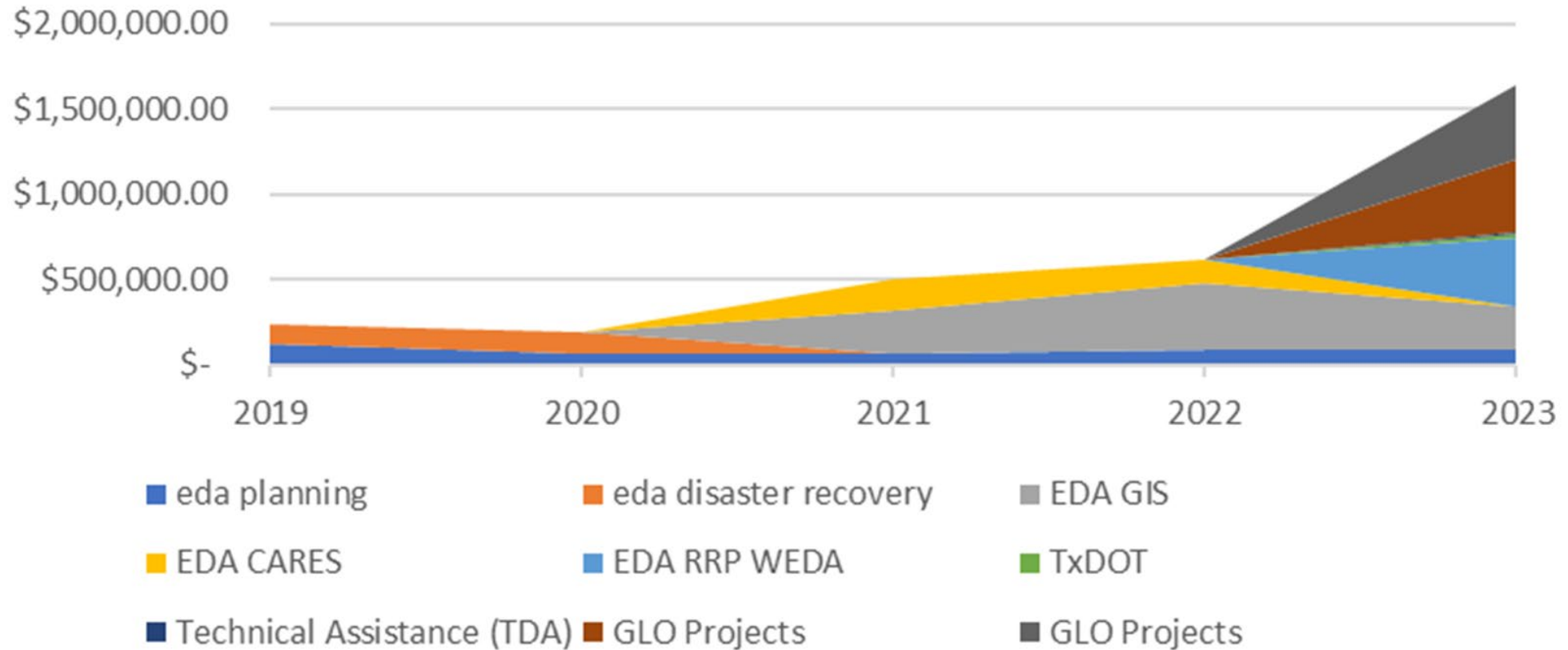
*CORRESPONDENCE
Kateryna Wowk

Translating the complexity of disaster resilience with local leaders

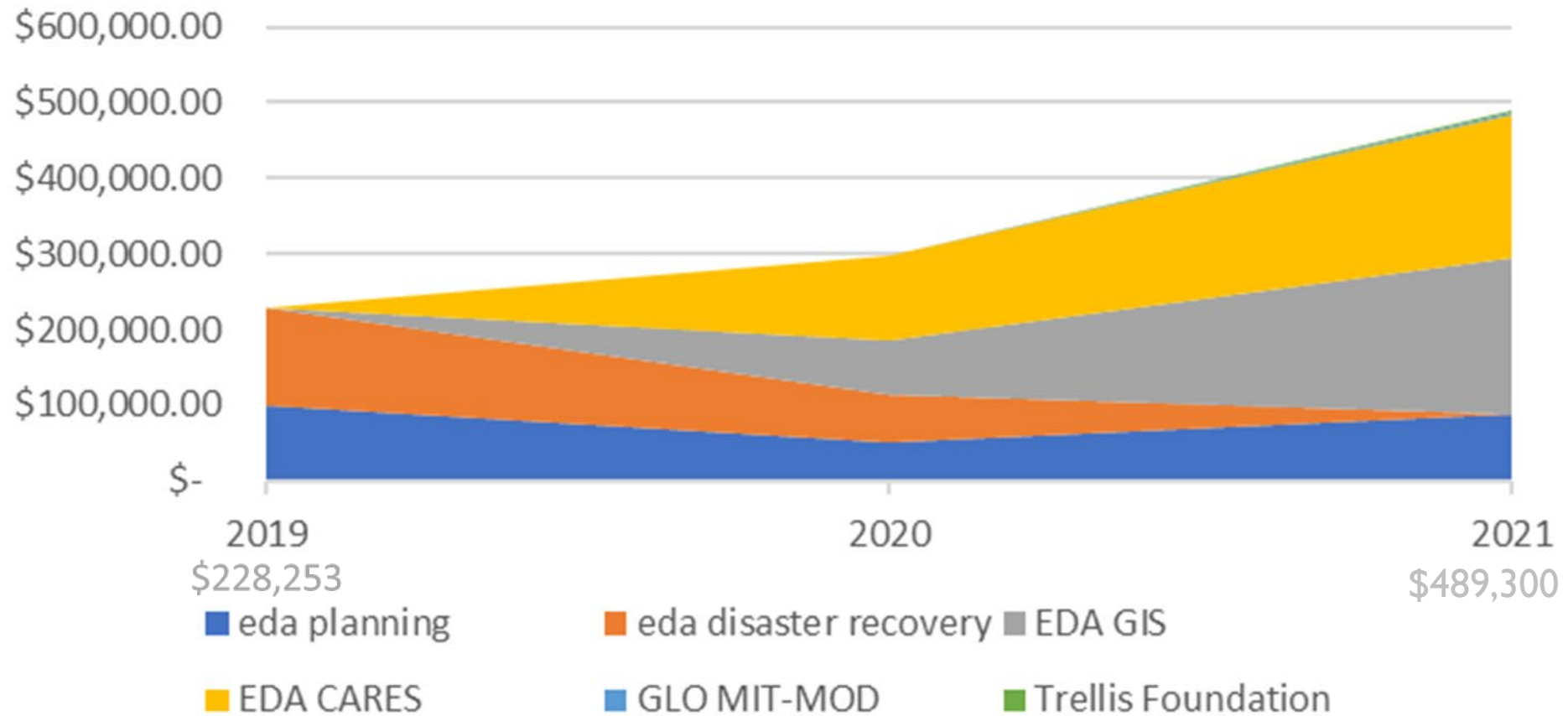
Kateryna Wowk^{1*}, Margaret Adams² and Emily Martinez³

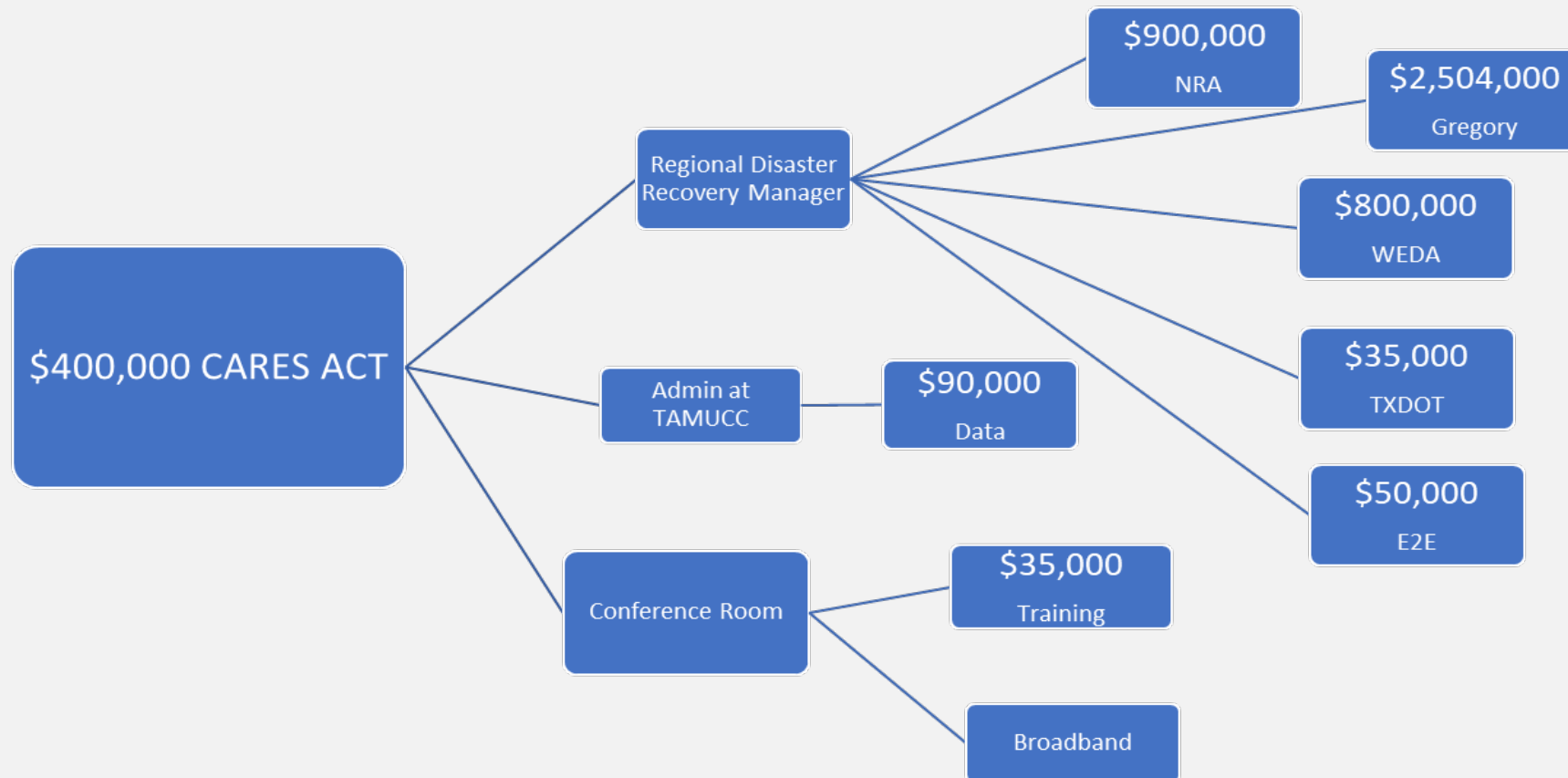
¹Harte Research Institute for Gulf of Mexico Studies, Texas A&M University-Corpus Christi, Corpus Christi, TX, United States, ²Texas General Land Office, Austin, TX, United States, ³Coastal Bend Council of Governments, Corpus Christi, TX, United States

CBCOG Economic Development Budget Growth 2019-2023

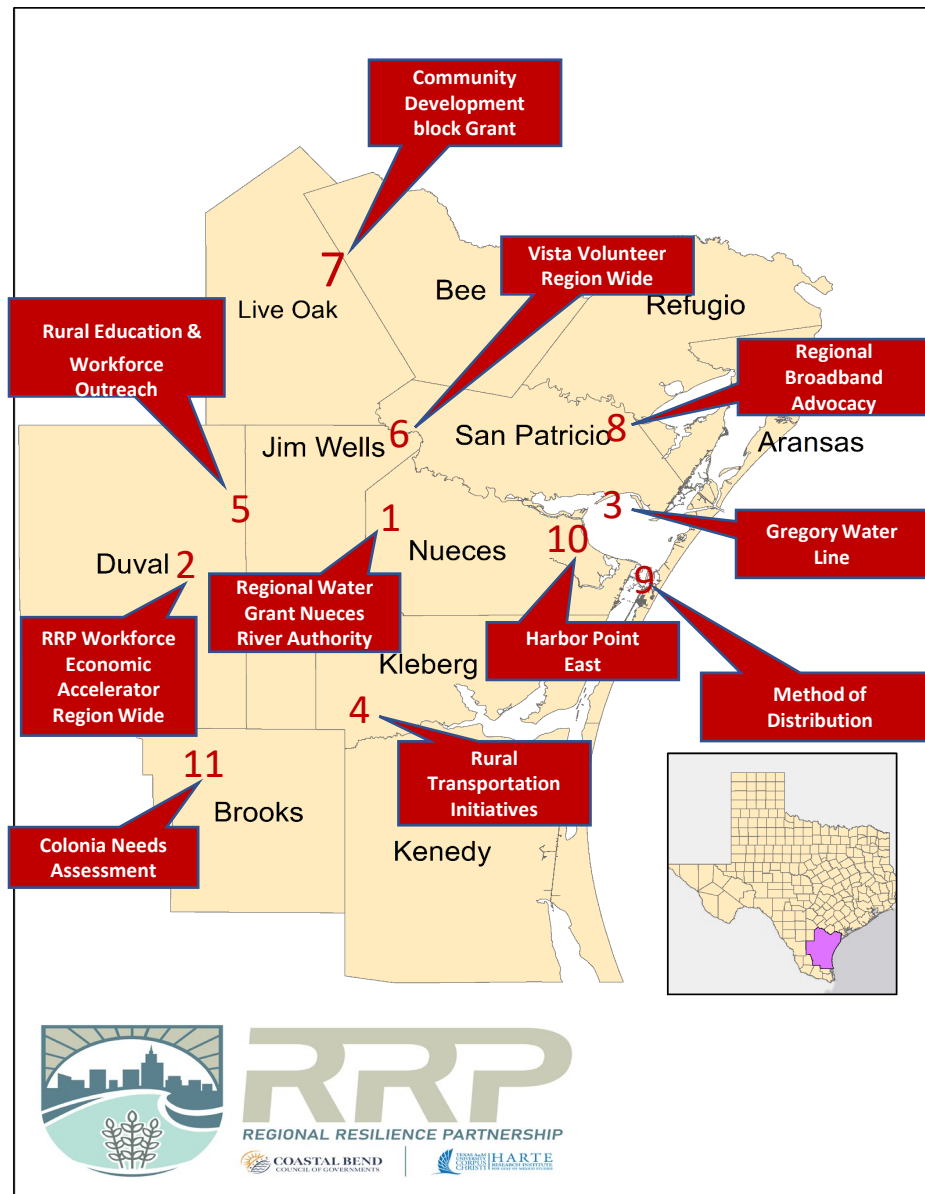


CBCOG Economic Development Revenue Growth 2019-2021





2022 ECONOMIC DEVELOPMENT INITIATIVES



- 1 **Regional Water Grant for Nueces River Authority** **\$900,000**
CBCOG procured a competitive grant for Nueces River Authority from the General Land Office in the amount of \$900,000 for replacing aging wastewater equipment and for a regional wastewater feasibility study.
- 2 **RRP Workforce and Economic Development Accelerator** **\$1,000,000**
The EDA awarded CBCOG a \$1,000,000 American Rescue Plan Award in partnership with TAMUCC and UTSA to assist Rural Coastal Bend Communities in developing and implementing resiliency plans to increase economic opportunities for the region.
- 3 **Gregory Water Line** **\$2,504,000**
CBCOG procured an American Rescue Plan Award on behalf of the City of Gregory for needed improvements to the City's water infrastructure.
- 4 **Rural Transportation Initiatives** **\$35,000**
CBCOG secured a contract with TxDOT to serve as the Lead Agency for public transportation planning particularly in the underserved rural areas.
- 5 **Rural Education and Workforce Outreach** **\$50,000**
In order to improve access to higher education for rural communities, E2E Partners contracted with CBCOG to handle outreach in the rural communities. As a result of this work, E2E was able to secure an additional \$45,000 to provide technical training in rural communities.
- 6 **VISTA Volunteer** **\$37,500**
CBCOG was selected to host a VISTA volunteer to help build economic development resilience Coastal Bend – specifically in rural, economically distressed communities - through gathering of data, planning and community outreach. The position has a market value of \$37,500 plus benefits.
- 7 **Community Development Block Grant Technical Assistance** **\$10,244**
Texas Department of Agriculture awarded CBCOG a contract in the amount of \$10,244 to provide technical assistance to CBCOG communities on how to apply for CDBG funding.
- 8 **Regional Broadband Advocacy** **\$TBD**
Broadband access continues to be a key infrastructure need in South Texas. Representative Todd Hunter appointed CBCOG to the State Broadband Committee. CBCOG also participates on the Brush County Broadband Task Force.
- 9 **Method of Distribution** **\$90,000**
While not competitively funded, the Texas General Land Office contracted with CBCOG to do a Method of Distribution for approximately \$180 Million for mitigation projects prepare for future disasters. CBCOG worked with partners at Texas A&M Corpus Christi to determine data based factors to determine allocation.
- 10 **Harbor Point East** **\$4,488,000**
CBCOG self-allocated 3% of the MIT funding to do a regional project. The Harbor Point East Project, in partnership with the Port of Corpus Christi, will provide a nature based stormwater solution that creates an ideal urban neighbor space for the entire community.
- 11 **Colonia Needs Assessment** **\$700,000**
CBCOG assisted Texas Department of Agriculture to coordinate with Brooks County to administer the Colonia Needs Assessment for the 11 County region. CBCOG will provide tech support

BUILD PARTNERSHIPS & ENGAGE NETWORKS → ADVANCE SCIENCE & UNDERSTANDING → BRIDGE KNOWLEDGE TO ACTION

RRP STRATEGIC PLAN

Vision

Coastal Bend and partner communities are resilient to natural and manmade disaster events and environmental change and are leaders in innovative strategies to mitigate disaster risk.

Mission

RRP brings a holistic approach to community resilience and capacity building, creating a foundation for robust economies, infrastructure, and ecosystems as well as strong and healthy social systems.

Relationships

Goal 1: Establish consistent, two-way communication with communities

Local Data for Local Resilience

Goal 2: Understand and define resilience at the local level with local data

Needs Assessment

Goal 3: Conduct a needs assessment in each Coastal Bend County

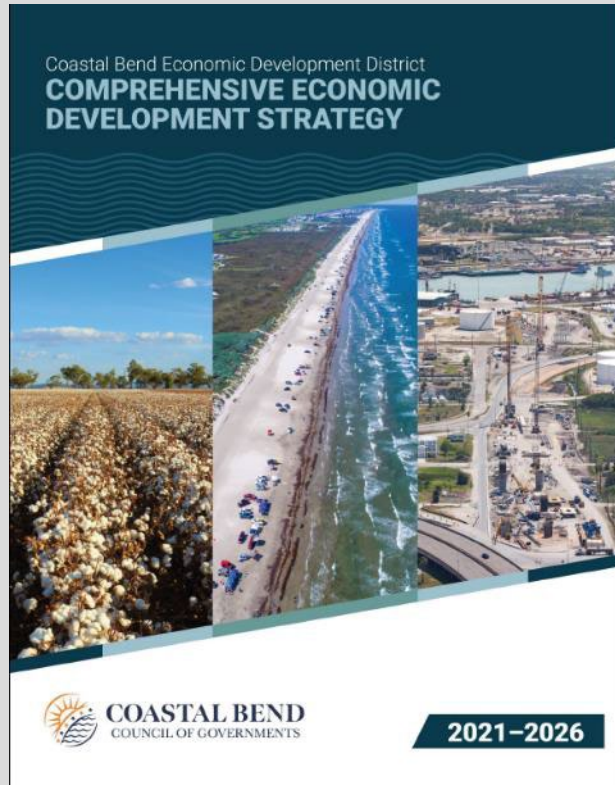
Strategies for Resilience

Goal 4: Create, implement and inform data-driven strategies for resilient decision-making

Capacity Building

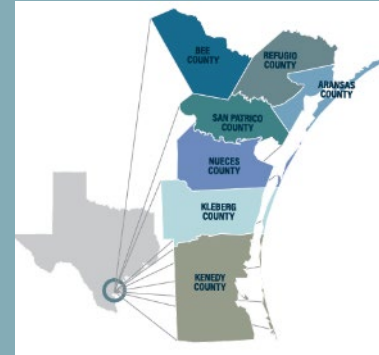
Goal 5: Build local capacity to strengthen resilience, mitigate risk and measure outcomes

COMPREHENSIVE ECONOMIC DEVELOPMENT STRATEGY



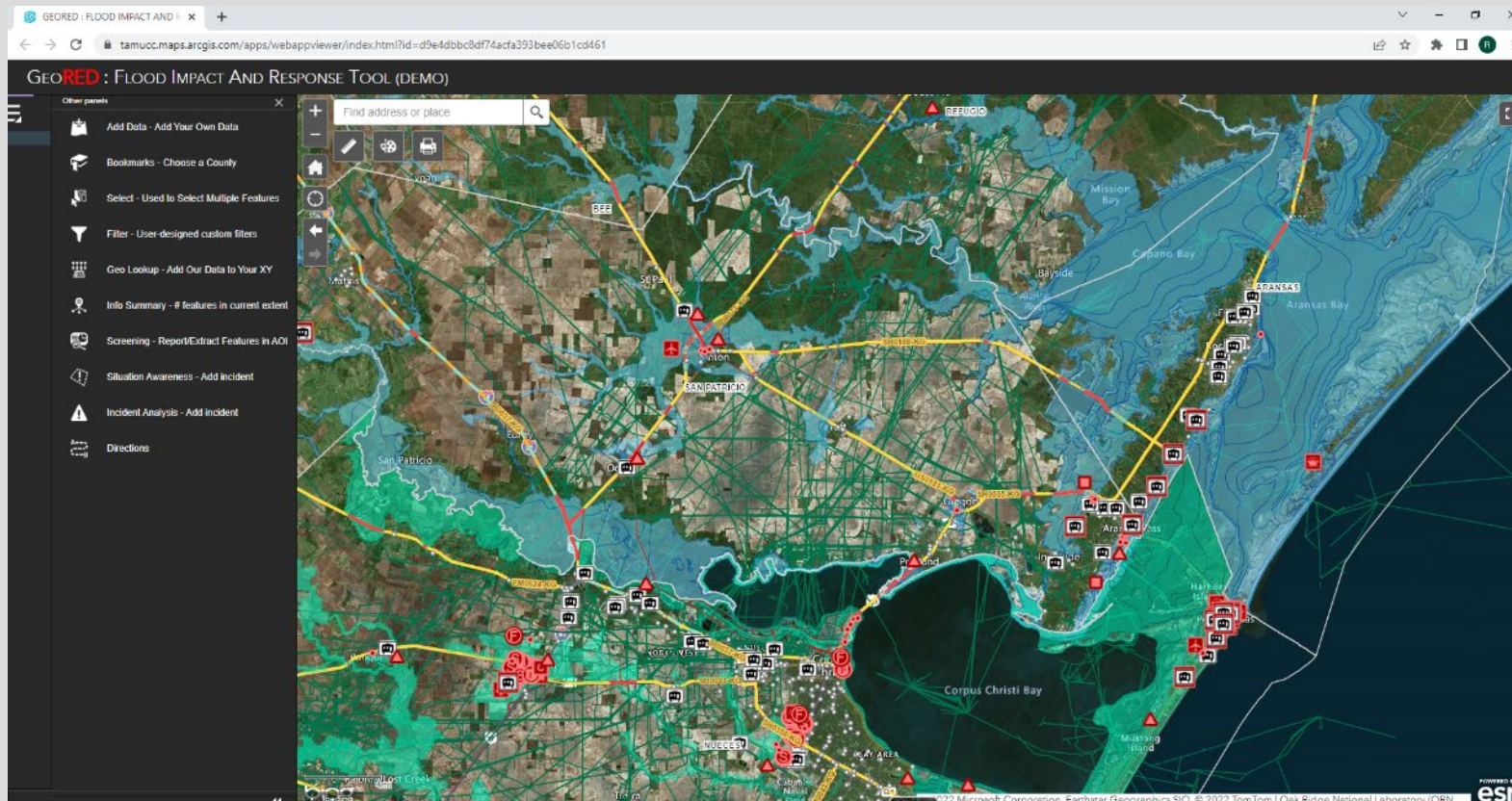
- CEDS is a strategy-driven plan for regional economic development, and is a prerequisite for designation by EDA as an [Economic Development District \(EDD\)](#)
- Driven by the CEDS Committee, the strategy is the result of a regionally-owned planning process designed to build capacity and guide the economic prosperity and resiliency of a region
- Must be updated every 5 yrs
- RRP was able to expand the stakeholder base needed to more meaningfully update the Coastal Bend CEDS for 2021-2026

RRP PROJECTS: GEOSPATIAL RESILIENT ECONOMIC DEVELOPMENT (GEORED)



Advancing ~\$1.5M project to build the South Texas Platform for Resilient Economic Development in seven Coastal Bend Counties to:

- Provide a common online platform to assess environmental and economic risk in a geospatial framework



Economic Development Administration funded the initial phase with focus on: Aransas, Bee, Refugio, San Patricio



TCEQ / Texas OneGulf provided additional support for Nueces, Kleberg and Kenedy Counties

GEORED: CO-PRODUCING THE TOOL

- Working with local officials to integrate, digitize and QA/QC local physical data, e.g., parcel level data, critical infrastructure, road data, etc.
- Working with ECDs and Chambers to identify and display economic data layers, e.g., supply chains, labor market analytics, opportunity zones, infrastructure etc.
- Will be overlaid with hazard information to enhance understanding of risk and opportunity



Corpus Christi Regional Economic Development Corporation

PROPERTIES COMMUNITIES BUSINESSES

Layers Demographics Workforce Custom Reports Clear Map Share My Favs GIS

ACTIVE LEGEND

Search

- ACS Geographic Mobility
- Businesses
- Infrastructure
- Flood Zones
- Education
- Zoning
- Recreation
- Broadband
- Port
- Military

Find address or place

Victoria

Corpus Christi

281 77 59

850

0 15 30 mi

Featured Export to CSV Share 45 Properties

Gandy Megastore
GANDY SPUR RD, Robstown, Nueces County, TX, 78380
1,600 Acres
FEATURED
Vacant Land Site For Sale

102 NAVIGATION BLVD
102 NAVIGATION BLVD, Corpus Christi, Nueces County, TX, 78408
25,490 Sqft 2.93 Acres
Wholesale/Distribution Building For Sale

RRP COMMUNICATIONS



Facebook



Instagram



LinkedIn

@CoastalBend.RRP